



State Water Resources Control Board
 Temporary Urgency Change Orders (10/31/2024)
 Russian River Hydrologic & Water Quality Report
 January 3, 2025 - January 9, 2025

Prepared as a requirement of the Orders approving Sonoma Water's Petition for Temporary Urgency Change in Permits 12947A, 12949, 12950, and 16596 (Applications 12919A, 15736, 15737, and 19351).

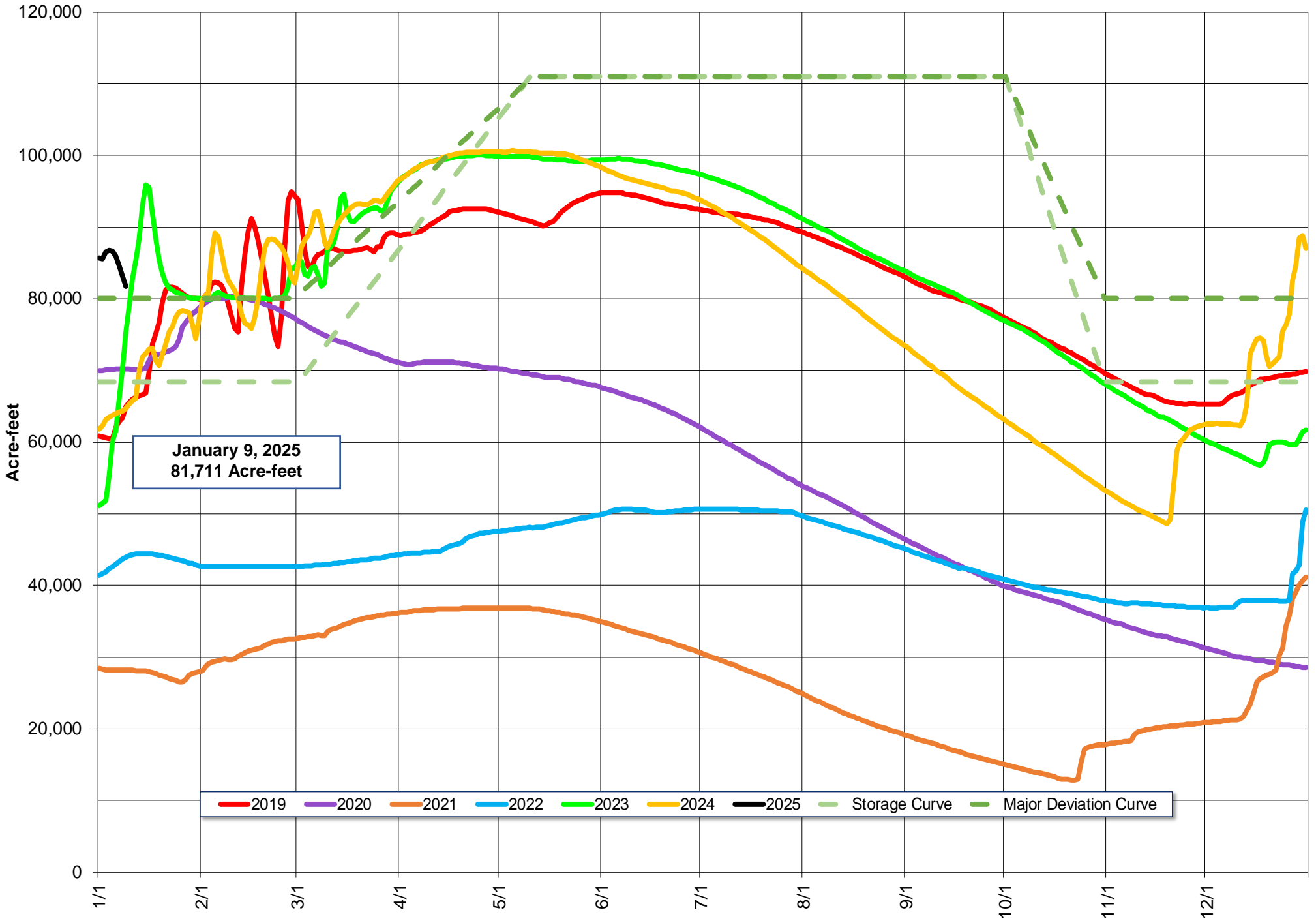
Instream Flow Requirements as of January 9, 2025

Basis	Reach	Instantaneous (cfs)	5-day Average (cfs)
Modified Per Order: Normal Condition	Upper Russian River	150	-
Modified Per Order: Normal Condition	Dry Creek	75	-
Modified Per Order: Normal Condition	Lower Russian River	125	-

Upper and Lower Russian River are based on criteria as established in the Order issued 10/31/2024.

Lake Mendocino

Lake Mendocino Storage 2019 - 2025 and Storage Curve



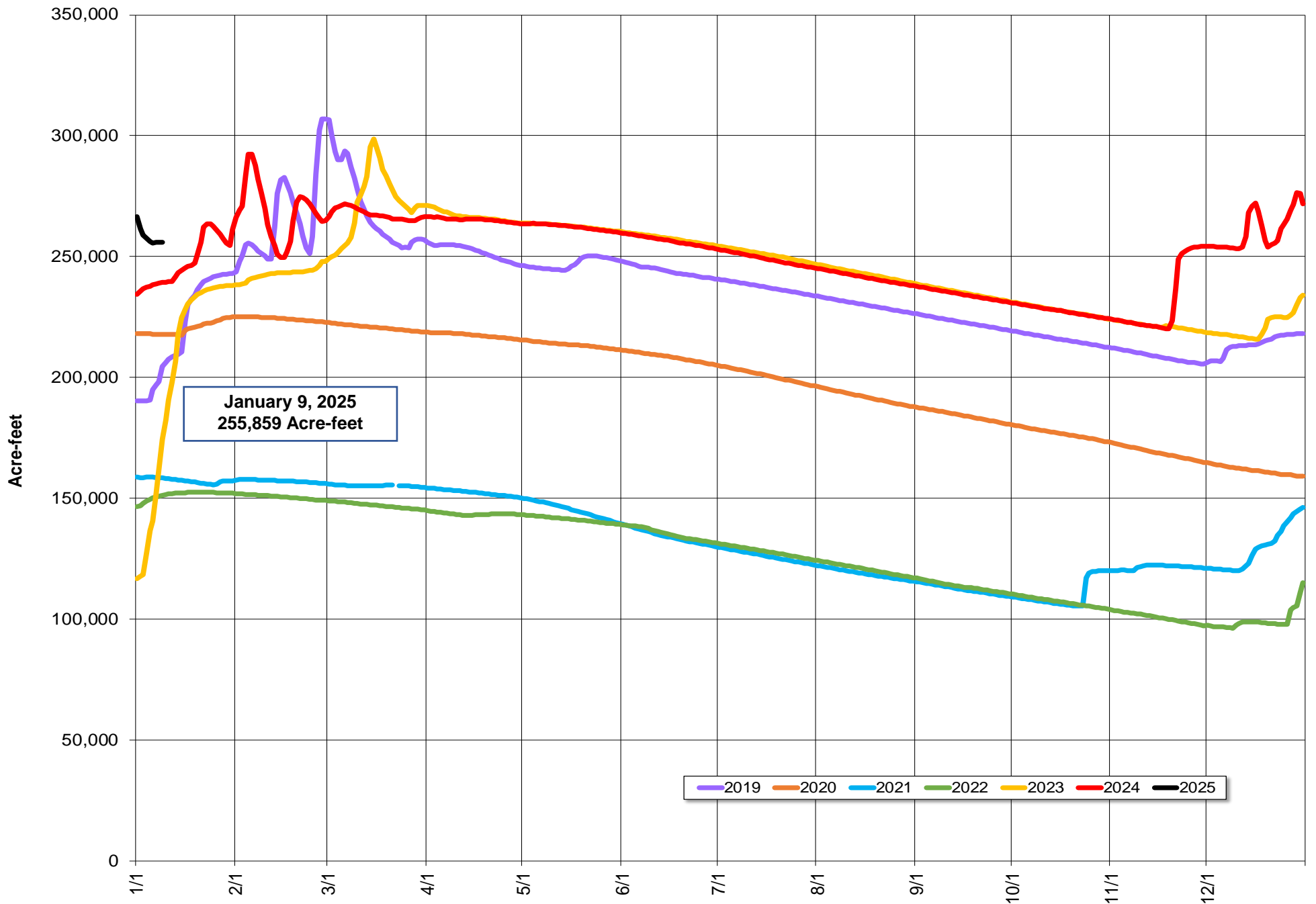
Storage (acre-feet)	January 9, 2025	81,711	
Change in Storage (acre-feet)	Last 30 days	Total	Average Daily Rate
		19,345	645
	Last 7 days	-4,869	-696
Daily Inflow (cfs)	Last 7 days	Min	152
		Max	1,010
		Mean	420
Release (cfs)	Last 7 days	Min	489
		Max	895
		Mean	695

Lake Sonoma



Todd Schram, February 10, 2024

Lake Sonoma Storage 2019-2025



Storage (acre-feet)	January 9, 2025	255,859	
Change in Storage (acre-feet)	Last 30 days	Total	Average Daily Rate
		2,437	81
	Last 7 days	-3,082	-440
Daily Inflow (cfs)	Last 7 days	Min	285
		Max	549
		Mean	367
Release (cfs)	Last 7 days	Min	292
		Max	1,808
		Mean	765

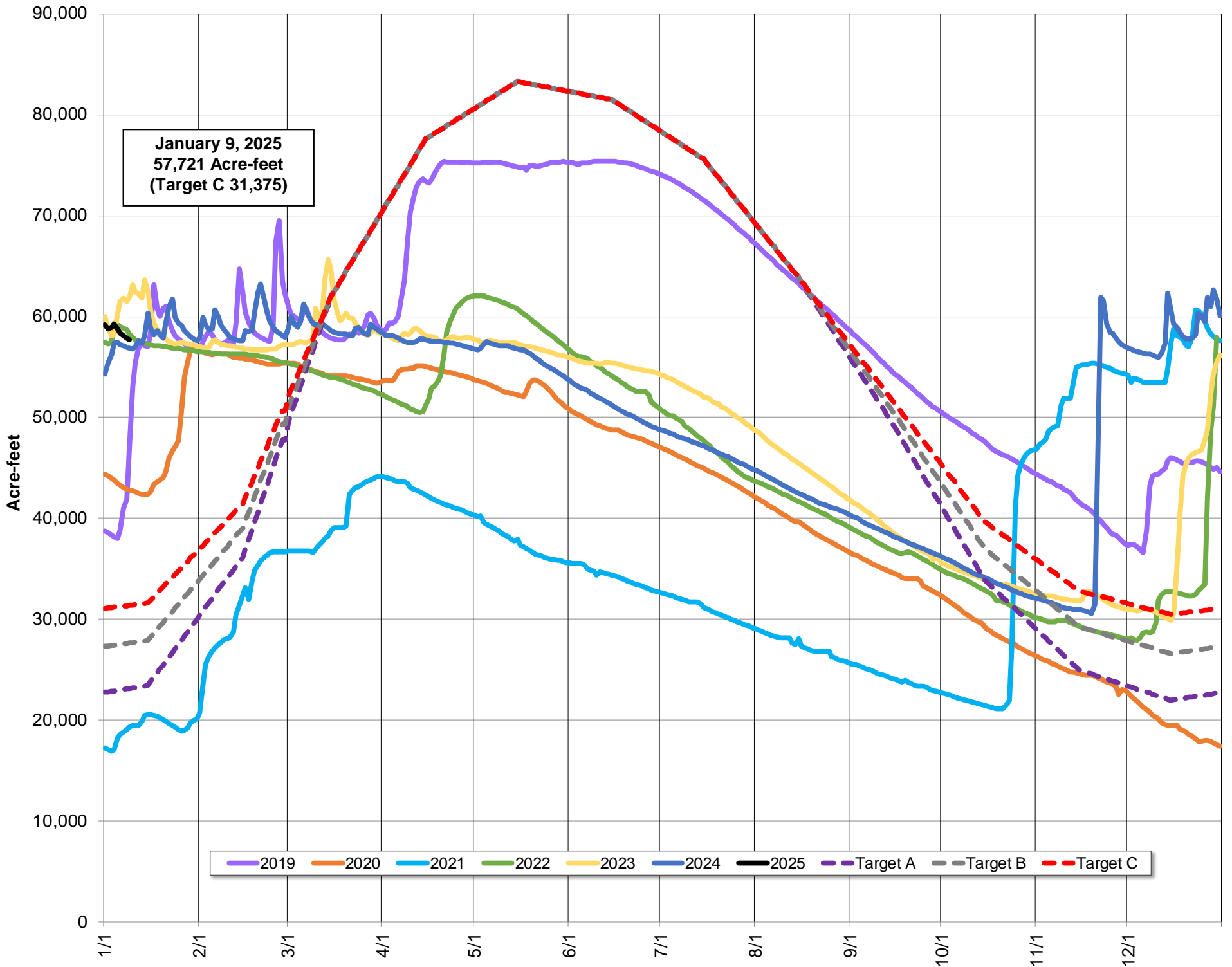
Potter Valley Project

PVP Diversion (cfs)	January 9, 2025	46
---------------------	-----------------	----

Parameter	Date Range	Cumulative	Daily Average
Inflow* (acre-feet)	October 1, 2024 - January 9, 2025	222,188	2,200
	Last 7 days	15,226	2,175

*Inflow calculation based on criteria established in D1610

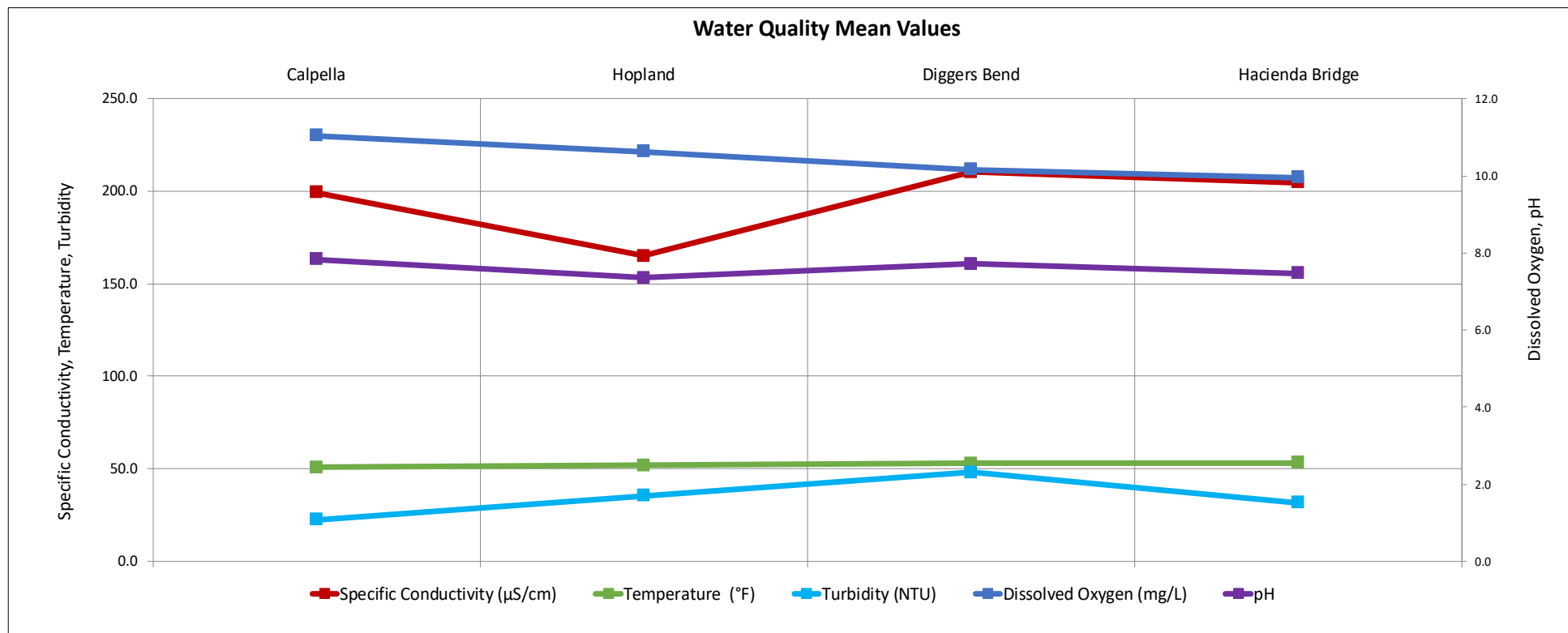
Lake Pillsbury Storage 2019 - 2025 and Target Storage Scenarios



Russian River Flows (January 3, 2025 - January 9, 2025)

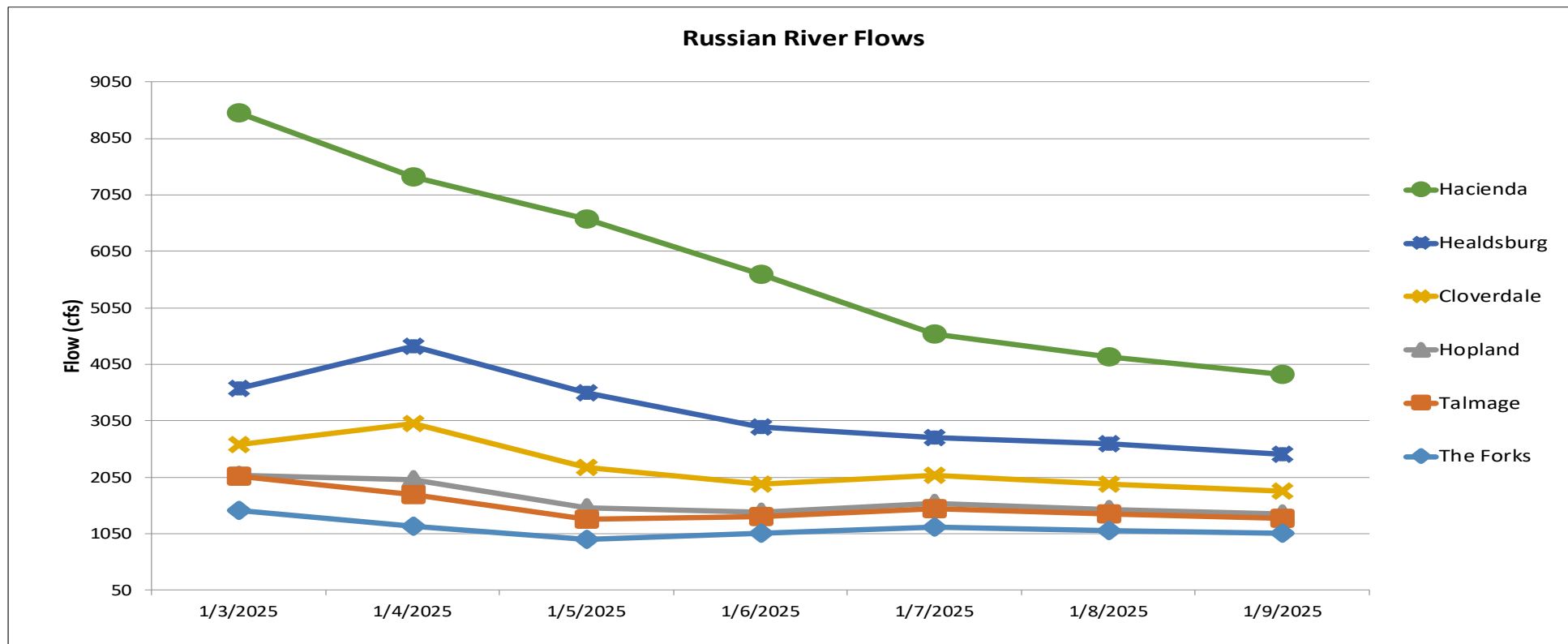
Parameter		Calpella	Hopland	Cloverdale*	Jimtown*	Diggers Bend	River Diversion System at Mirabel*	Hacienda Bridge	Johnsons Beach*
		USGS 11461500	USGS 11462500	USGS 11463000	USGS 11463682	USGS 11463980	SCWA	USGS 11467000	SCWA
Temperature (°F)	Min	48.0	50.5		50.9	51.1		51.8	
	Max	53.1	53.2		54.7	54.7		54.1	
	Mean	50.7	51.9		52.7	52.9		53.1	
Specific Conductivity (µS/cm)	Min	135.0	114.0			162.0		171.0	
	Max	225.0	181.0			224.0		228.0	
	Mean	199.3	165.1			210.4		204.6	
Dissolved Oxygen (mg/L)	Min	10.6	10.1			9.8		9.5	
	Max	11.4	10.9			10.5		10.2	
	Mean	11.1	10.6			10.2		10.0	
Dissolved Oxygen (% Saturation)	Min	97.0	93.0			91.5		88.1	
	Max	100.4	99.3			96.1		93.8	
	Mean	98.7	96.5			93.5		91.8	
pH	Min	7.7	7.2			7.5		7.4	
	Max	7.9	7.5			7.8		7.5	
	Mean	7.8	7.4			7.7		7.5	
Turbidity (NTU)	Min	9.6	21.6			24.2		20.4	
	Max	213.0	168.0			109.0		75.9	
	Mean	22.3	35.3			48.1		31.5	

*Station operated seasonally



Gage	24-hr Average Flow (cfs)						
	Jan 3, 2025	Jan 4, 2025	Jan 5, 2025	Jan 6, 2025	Jan 7, 2025	Jan 8, 2025	Jan 9, 2025
The Forks*	1465	1189	951	1063	1161	1104	1058
Talmage USGS 11462080	2065	1744	1311	1351	1500	1400	1318
Hopland USGS 11462500	2091	2001	1516	1429	1582	1478	1392
Cloverdale USGS 11463000	2629	2995	2221	1928	2082	1934	1806
Healdsburg USGS 11464000	3615	4369	3544	2943	2751	2650	2458
Hacienda USGS 11467000	8500	7363	6616	5645	4578	4188	3864

*West Fork(USGS 11461000) + East Fork (Coyote Valley Dam Release)

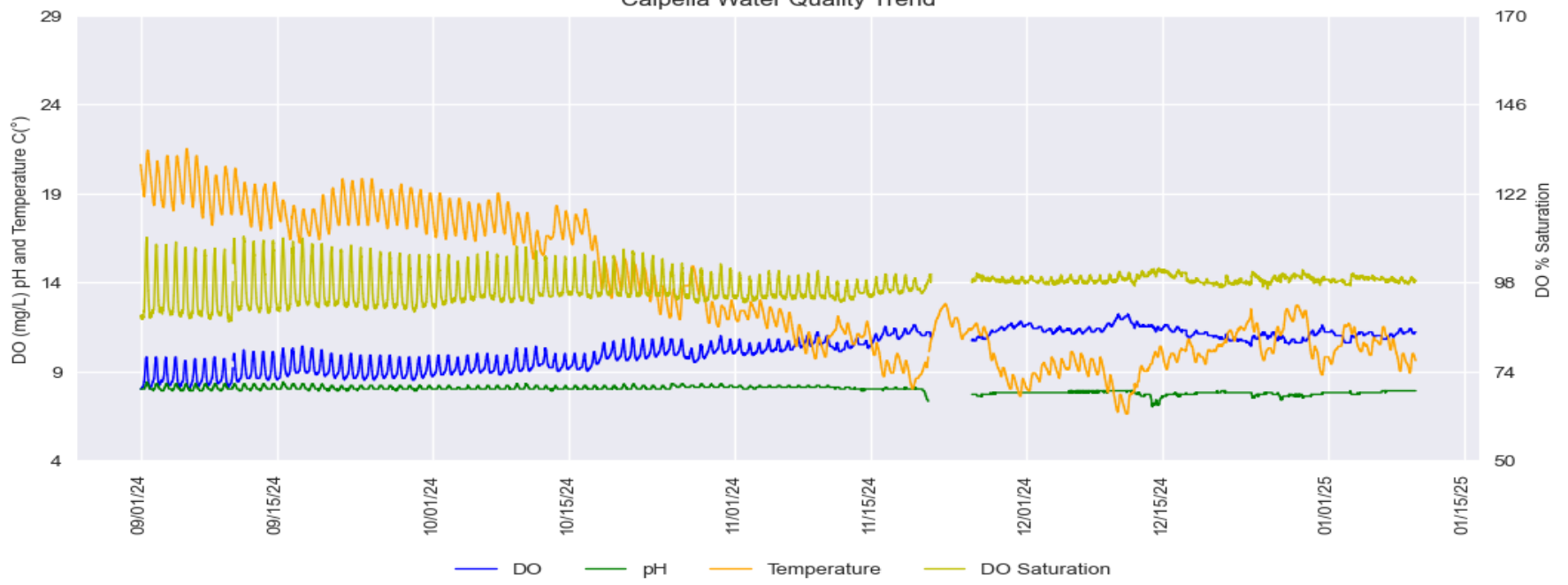


Russian River Water Quality September 1, 2024 – January 9, 2025

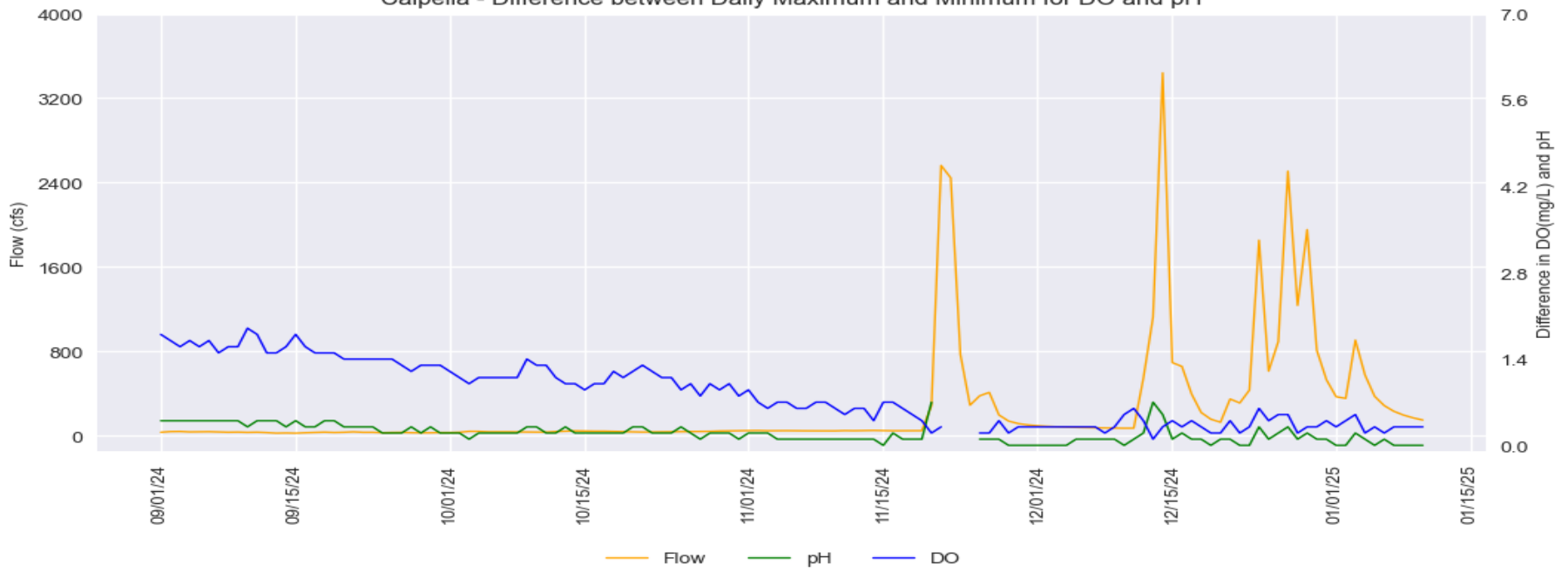
Provisional Data Subject to Revision

Calpella

Calpella Water Quality Trend

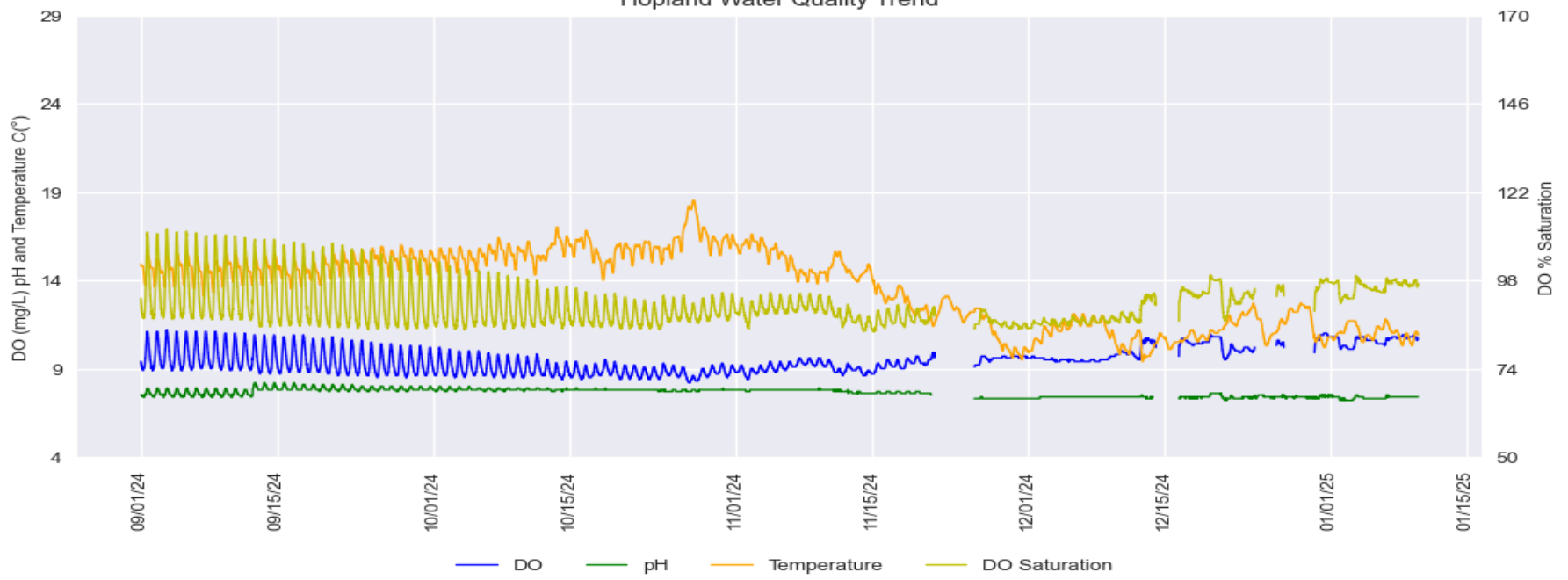


Calpella - Difference between Daily Maximum and Minimum for DO and pH

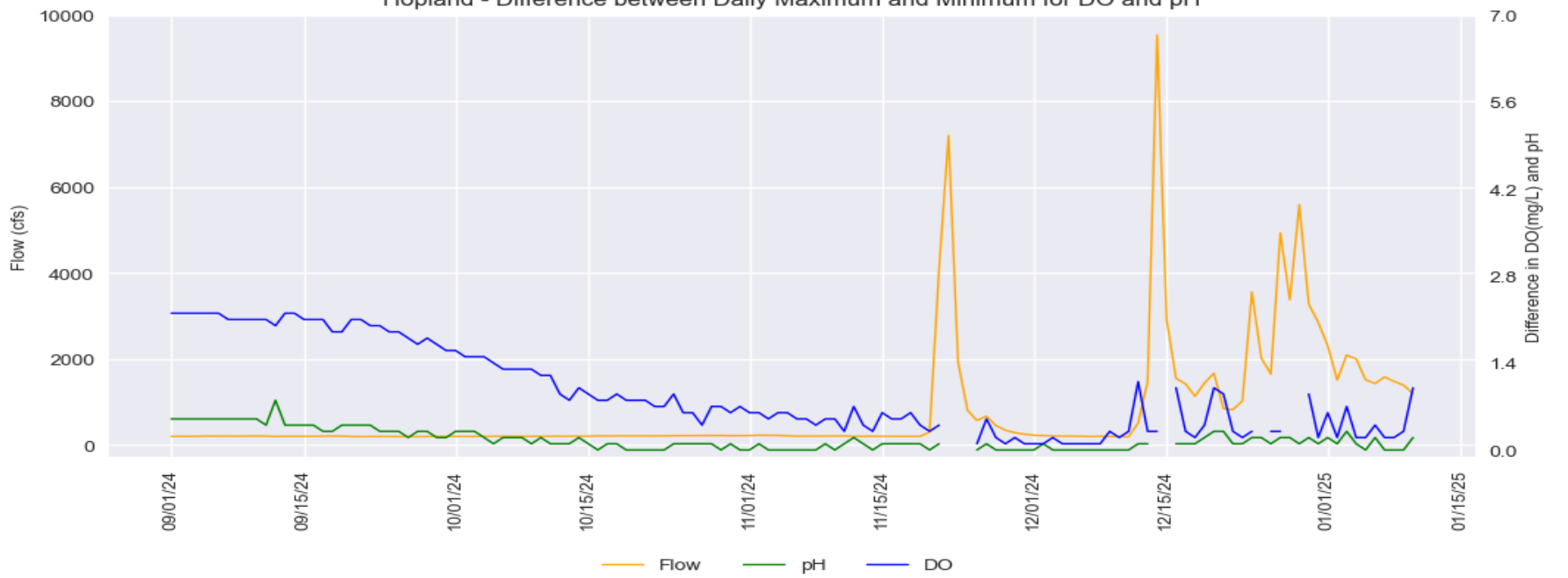


Hopland

Hopland Water Quality Trend



Hopland - Difference between Daily Maximum and Minimum for DO and pH

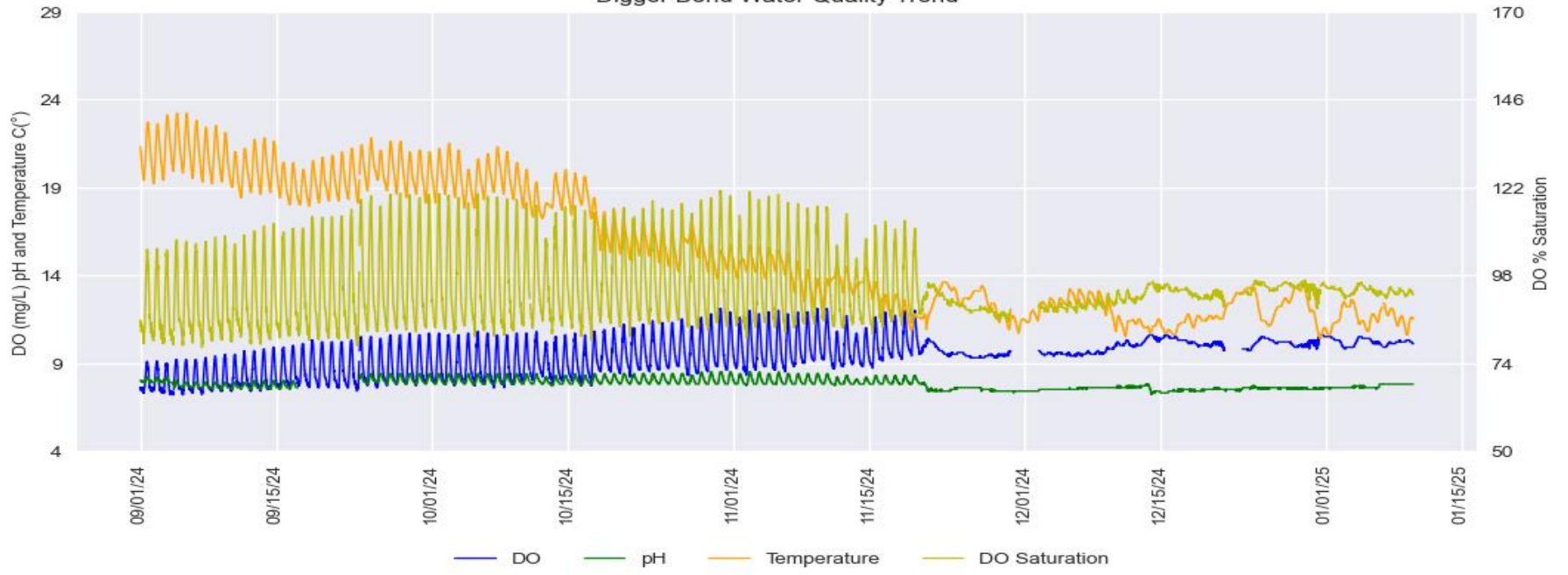


Russian River Water Quality September 1, 2024 – January 9, 2025

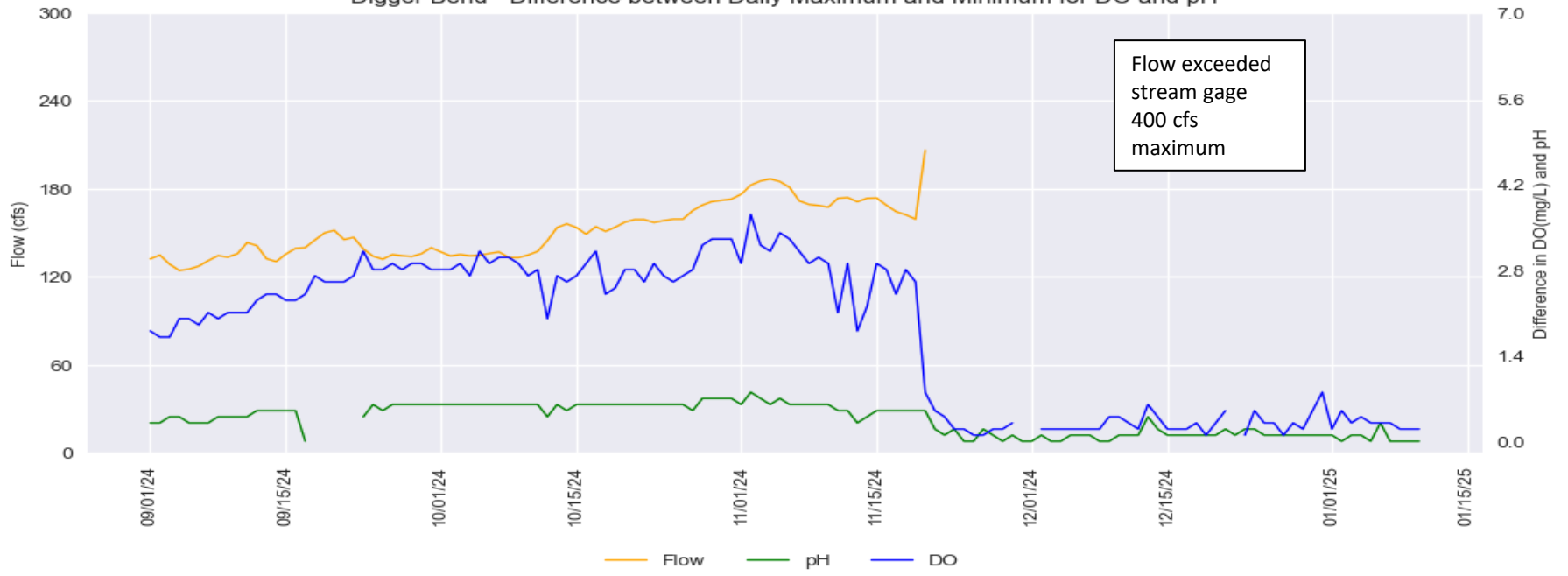
Provisional Data Subject to Revision

Digger Bend

Digger Bend Water Quality Trend

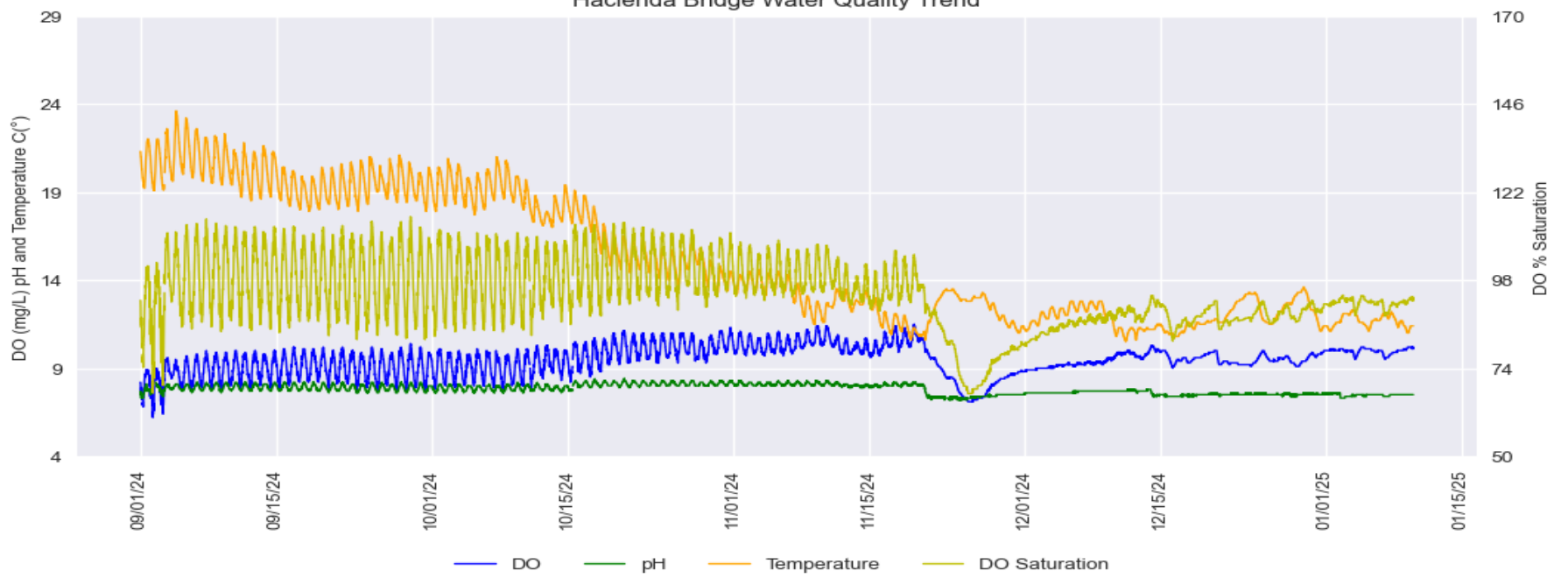


Digger Bend - Difference between Daily Maximum and Minimum for DO and pH

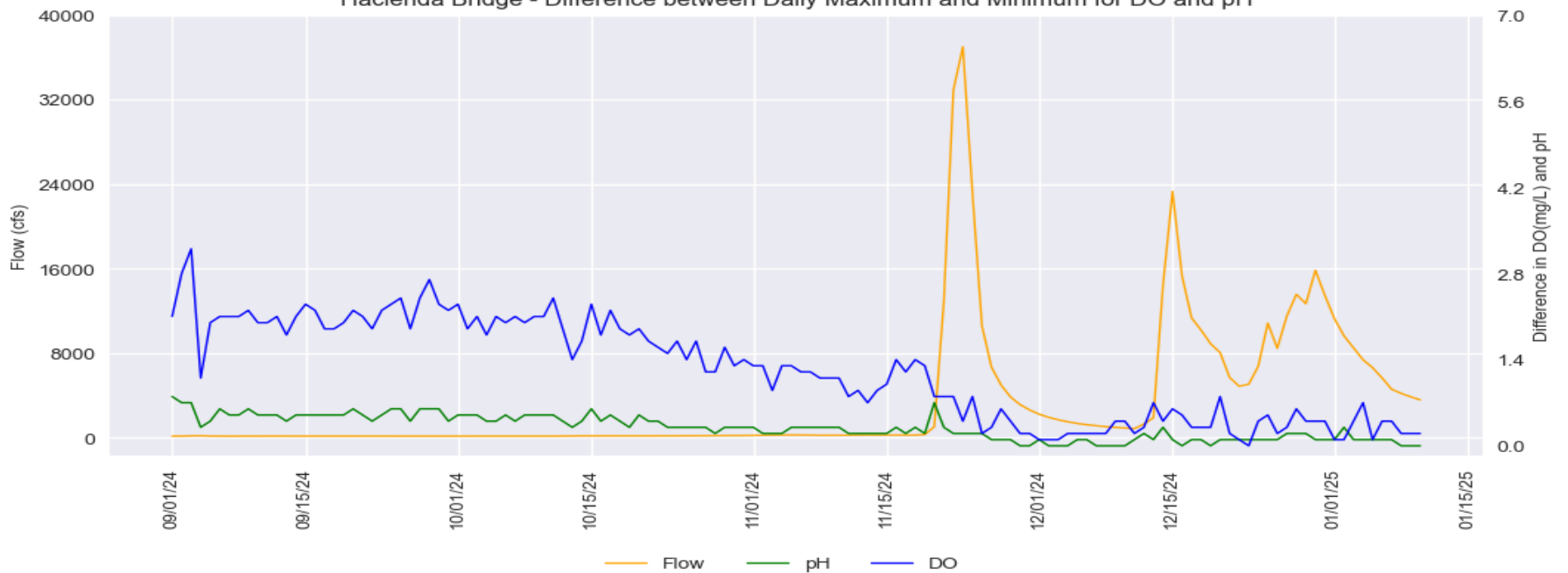


Hacienda Bridge

Hacienda Bridge Water Quality Trend



Hacienda Bridge - Difference between Daily Maximum and Minimum for DO and pH

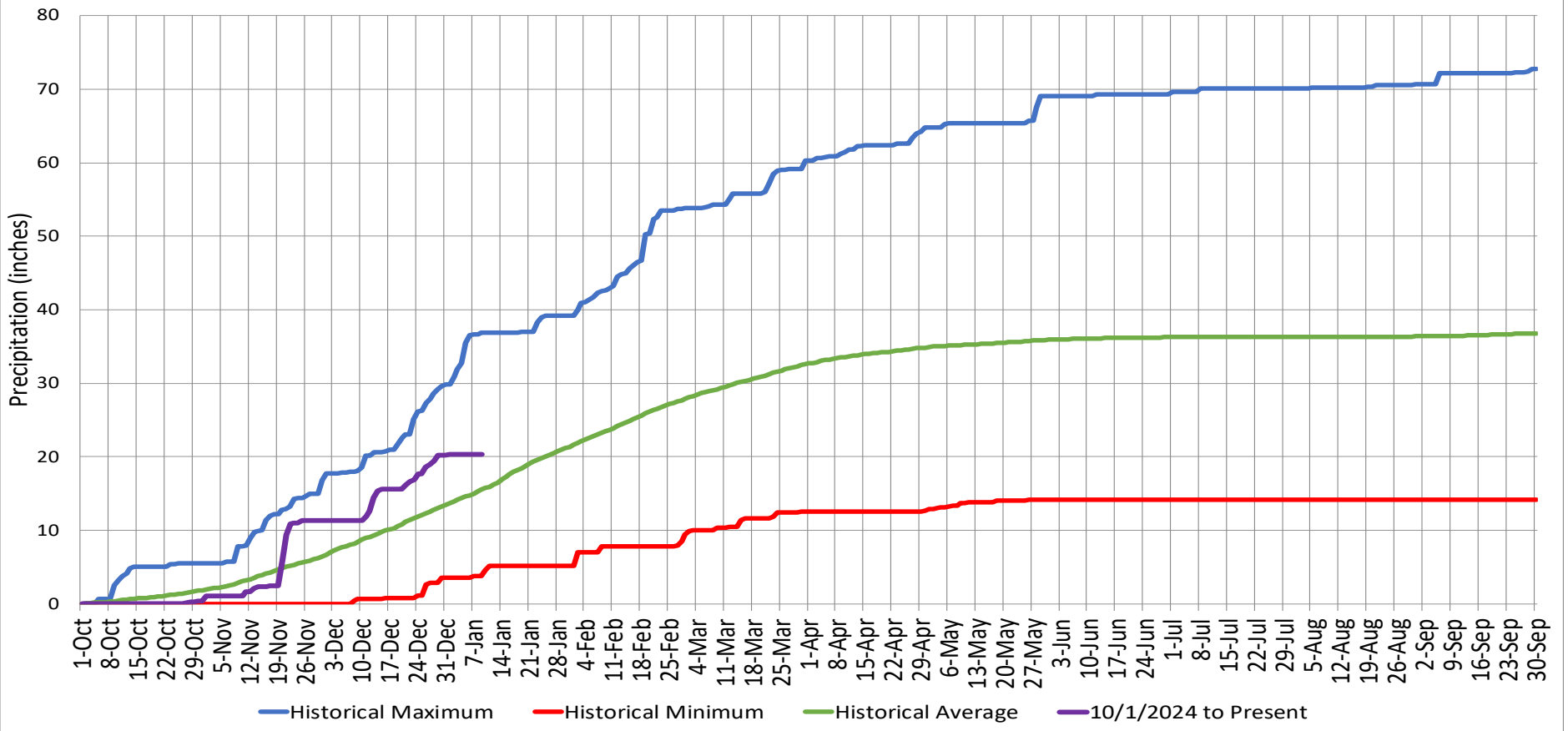


Precipitation

Ukiah Municipal Airport (WBAN: 72590523275 (KUKI))

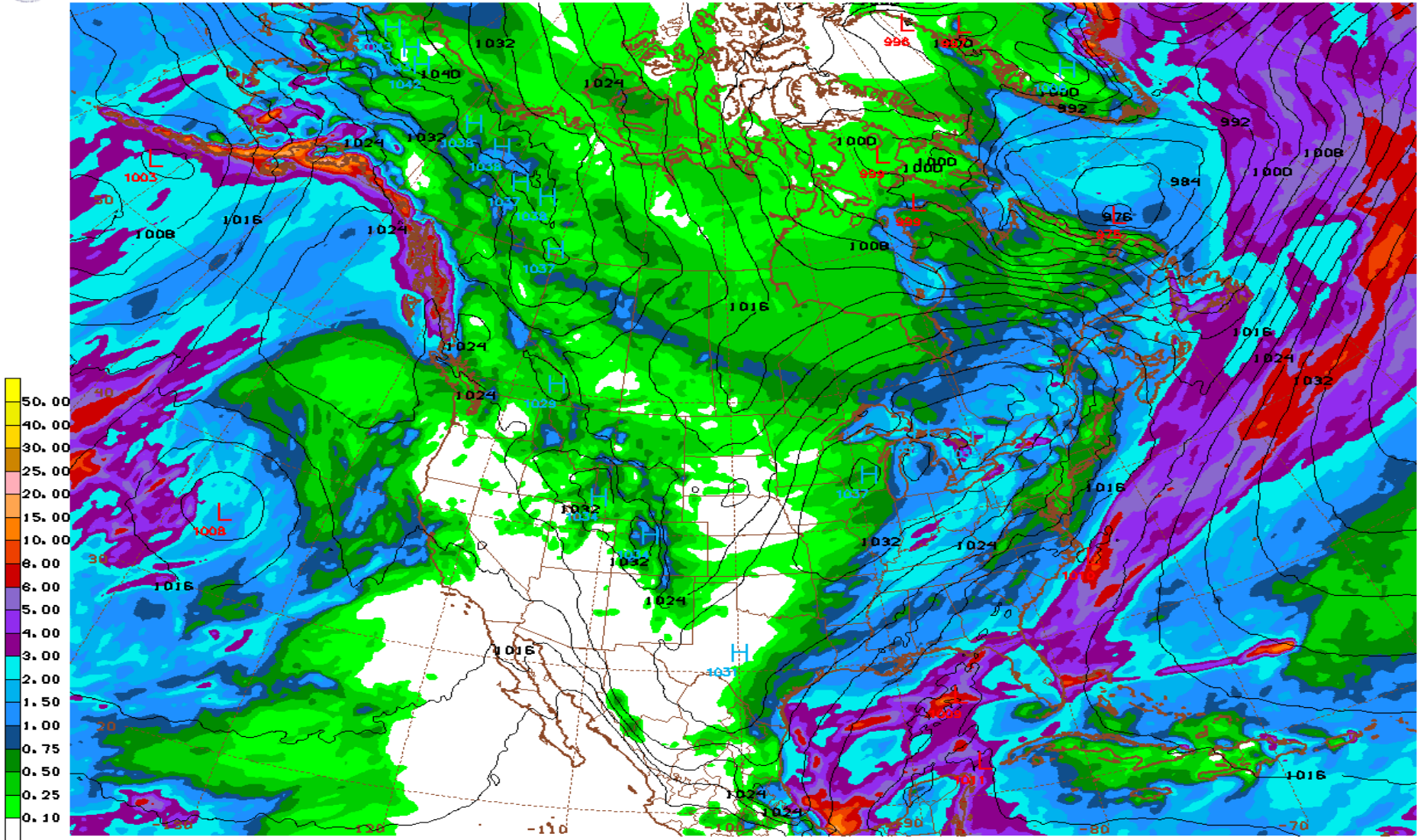
Date Range	Cumulative (inches)
Oct 1, 2024 - Jan 9, 2025	20.33
Last 7 Days*	0.00

Cumulative Precipitation Comparison of Current Year versus Historic Record



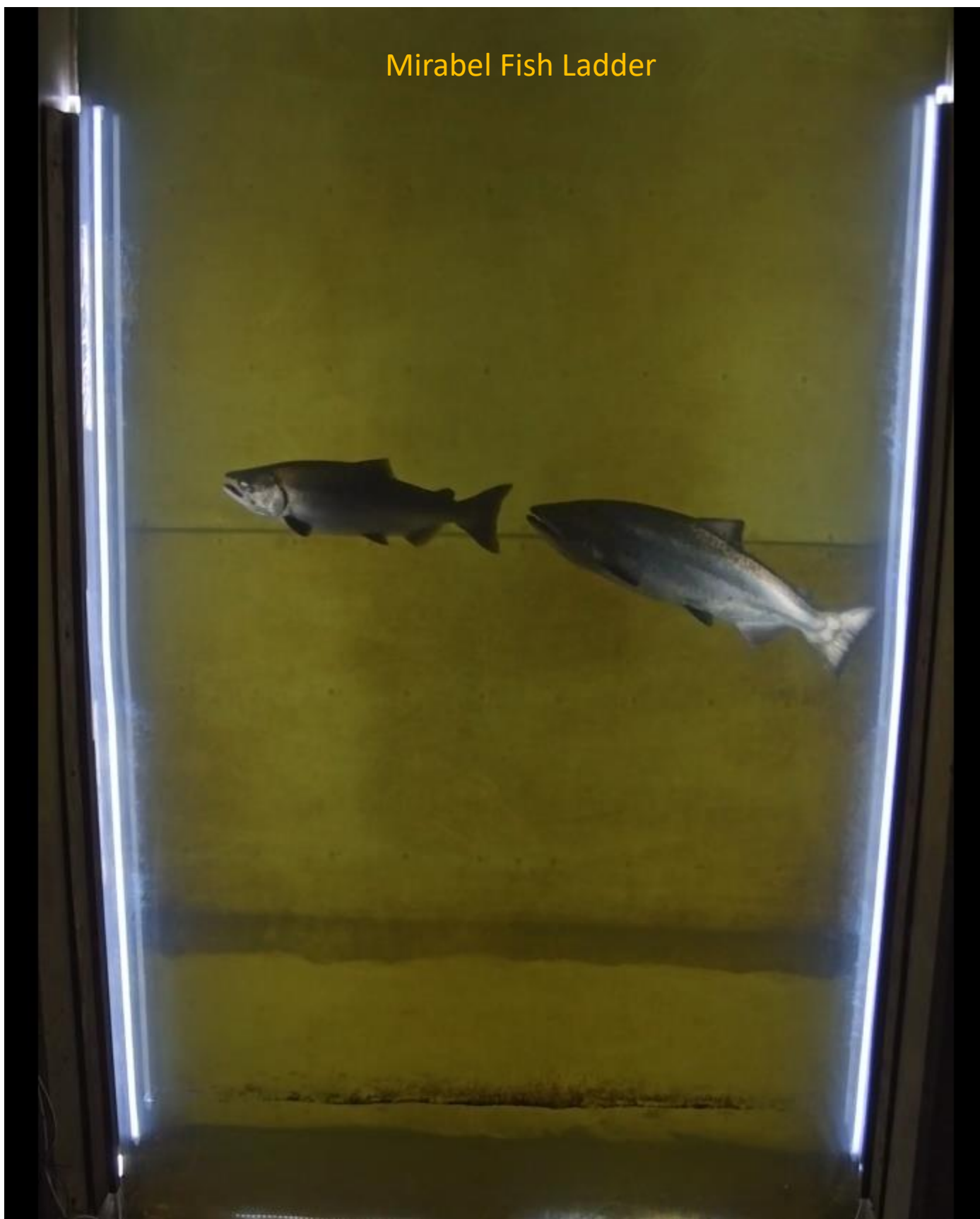
Global Forecast System Model 16-day Cumulative Precipitation Forecast

6FS 01/13/25 12UTC 384HR FCST VALID MED 01/29/25 12UTC NOAA/NWS/NCEP



6FS MED 250129/1200V384 ENSL (4MB). 384HR ACCUMULATED PRECIP (IN)
 Date Range: Jan 13 - Jan 29, 2025
 Forecasted Cumulative (inches): **0.64**

Russian River Fisheries Monitoring



Sonoma Water operates a video camera at the Mirabel Inflatable dam to count the number of adult salmonids returning to the Russian River. Due to an impending storm the dam was deflated on November 19, 2024, and the video equipment was removed for the season. Sonoma Water has completed reviewing the data collected during the 2024 season and the preliminary count is 1,512 adult Chinook. The 2024 count is less than the long-term average of 2,610 Chinook, but the camera was removed earlier in the year than typical, and it is likely that many adult Chinook have returned since removing the camera.